

Norfolk County Council proposes to make a Temporary Traffic Regulation Order (the "Order") (NTRO8086) affecting the A140 Cromer Road (northbound only) from 30m south of its junction with Mayfield Avenue to 300m north of its junction with Middletons Lane (the "Road") in the Parish of Hellesdon to facilitate safe surfacing works, the Road will be temporarily closed (except for pedestrian access) for the duration of the works only whilst signs indicating closures are in place which is anticipated to be from 7<sup>th</sup> to 12<sup>th</sup> June 2024, but may continue to be closed until the 24<sup>th</sup> July 2024 where the closure is still required beyond the anticipated dates.

Vehicular access will be permitted to a final destination in the Road where signs indicating such access is possible and permitted are in place.

The Order shall automatically revoke on the completion of the works when the closure is no longer necessary or otherwise on the 24<sup>th</sup> July 2024 without further notice.

If necessary, the restriction could run for a maximum period of 18 months from the date the Order is effective.

Alternative route is via: A140 Cromer Road, A1042 Mile Cross Lane/ Chartwell Road, A1151 Wroxham Road, A1270 Broadland Northway, A140 Holt Road (Hellesdon, Beeston St. Andrew, Spixworth, Horsford, Rackheath, Sprowston, Old Catton, Horsham St. Faith and Newton St. Faith).

A person who contravenes, or who uses or permits the use of a vehicle in contravention of the closure imposed by the Order shall be guilty of an offence.

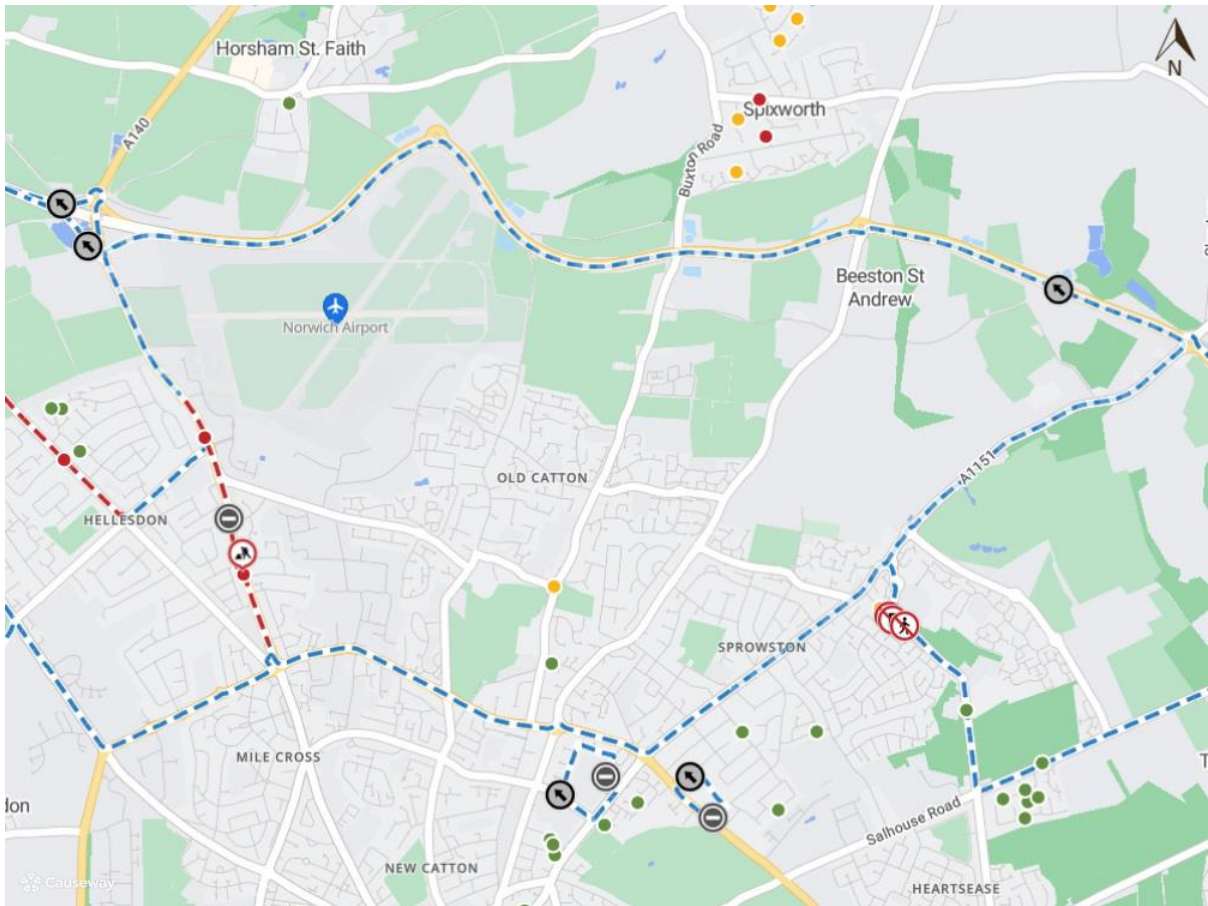
Penalty: £1000 maximum fine on conviction and/or endorsement for contravention.

In the event of the start date being delayed the new start date will be displayed on site in advance.

Full details on the closure are available at <https://one.network>. Any enquiries that cannot be answered on the one.network website should be directed to the North Area Streetworks (Community and Environmental Services Department) contactable by telephone at 0344 800 8020 or email at [streetworks@norfolk.gov.uk](mailto:streetworks@norfolk.gov.uk)

Dated this 24<sup>th</sup> day of May 2024.

Katrina Hulatt  
Director of Legal Services (nplaw)  
County Hall  
Martineau Lane  
Norwich  
NR1 2DH



Imagery © 2023 MapTiler | Imagery © 2023 Hexagon | © MapTiler © OpenStreetMap contributors